

Last information update: March 2025

**Product configuration: PY11**

PY11: Ø102mm body - BLE Casambi - Wide Flood optic - Neutral White

**Product code**

PY11: Ø102mm body - BLE Casambi - Wide Flood optic - Neutral White

**Technical description**

Adjustable spotlight with adapter for installation on an electrified track or base. High chromatic yield LED lamp with Neutral White (4000K) tone and OptiBeam Lens optic system and Wide Flood optic. Dimmable electronic DALI power supply integrated in product. Luminaire made of die-cast aluminium and thermoplastic material that allows a 360° rotation about the vertical axis and 90° tilting relative to the horizontal plane with mechanical aiming locks. Passive heat dissipation. Spotlight with "Push&Go" system designed to hold up to three flat accessories at the same time. The same system can also be used to apply another external component selected from the directional flaps and anti-glare screen. All internal accessories rotate 360° about the spotlight longitudinal axis.

**Installation**

Installation on an electrified track or base.

**Colour**

White (01) | Black (04)

**Weight (Kg)**

1.33

**Mounting**

wall surface|ceiling surface

**Wiring**

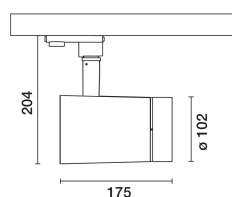
Electronic components integrated in product

Complies with EN60598-1 and pertinent regulations



IP20

IP40

for optical  
assembly**Technical data**

Im system:	1909.0	Life Time LED 1:	> 50,000h - L90 - B10 (Ta 25C)
W system:	19.9	Lamp code:	LED
Im source:	2300	Number of lamps for optical assembly:	1
W source:	18	ZVEI Code:	LED
Luminous efficiency (lm/W, real value):	95.93	Number of optical assemblies:	1
Im in emergency mode:	-	Power factor:	See installation instructions
Total light flux at or above an angle of 90° [Lm]:	0.0	Inrush current:	20 A / - µs
Light Output Ratio (L.O.R.) [%]:	83	Maximum number of luminaires of this type per miniature circuit breaker:	B10A: 50 luminaires B16A: 80 luminaires C10A: 83 luminaires C16A: 136 luminaires
Beam angle [°]:	46°	Minimum dimming %:	1
CRI:	90	Overvoltage protection:	0kV Common mode & 0kV Differential mode
Colour temperature [K]:	4000	Control:	Casambi
MacAdam Step:	2		