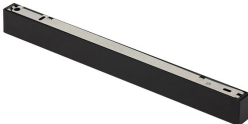


Binario Low Voltage DALI Powerline

Last information update: February 2025



Accessory code

MZ93: DALI Powerline driver box Low Voltage track with cables - 150W

Technical description

Box for 150W AC/DC driver that also functions as a ceiling rose for pendant track assembly. Made of extruded aluminium with thermoplastic end caps. Steel ceiling fixing plate. 2P electrical connection cable and steel pendant cable (L 2000 mm) included.

Installation

Ceiling fixing plate. Functions as a rose for a pendant track or can be surface-mounted at the end of the track.

Colour

White (01) | Black (04)

Weight (Kg)

1

Dimension (mm) (*)

540x31x57.44

* The dimensions may change according to production requirements to ensure that performance levels and installation methods are observed.

Wiring

Connection to line on terminal board with screw connections. Low voltage output connection on track power supply cap.

Complies with EN60598-1 and pertinent regulations



Technical data

Control: DALI